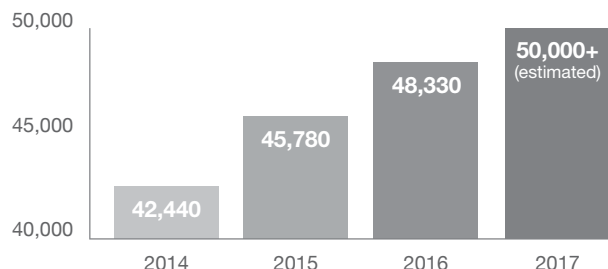


An alarming trend.

Oral cancer statistics are changing, and not for the better.

Americans Diagnosed with Oral or Pharyngeal Cancer*



Worldwide the problem is far greater, with new cases annually exceeding 450,000.†

Change the outcome.

The ViziLite PRO adjunctive screening device may facilitate early detection of potentially harmful abnormalities.



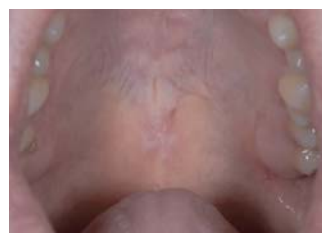
Early detection is critical.

The conventional head and neck examination has not significantly reduced mortality rates or facilitated early diagnosis.

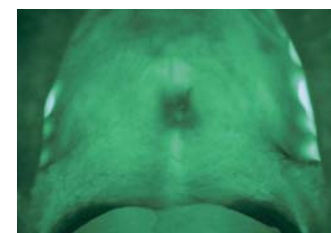
Late Diagnosis	Early Diagnosis
Poor survival rates (~57% will be alive in 5 years)†	Increases survival rates (~83% will be alive in 5 years)†
Requires aggressive treatments	Less invasive treatments may prove successful
Lowers patient quality of life	May extend life and improve quality of life

See the difference.

Lack of fluorescence reveals damaged or abnormal cells before they may be noticed visually using a normal clinical exam light.



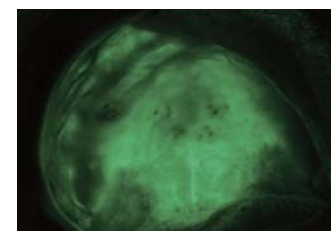
Mild dysplasia viewed under white light with the naked eye



Same patient's oral cavity; visualization enhanced by ViziLite PRO



Moderate dysplasia viewed under white light with the naked eye



Same patient's oral cavity; visualization enhanced by ViziLite PRO

Mutual Patient & Office Benefit

- Easy and painless examination
- Increased likelihood of early detection
- Support research
- by technology
- Improved mind
- Mental

The Bottom Line

Ultimately, how you present this service to your patients and how frequently you encourage them to be re-screened, are both up to you. Implement a structure that suits your practice, and start changing statistics for the better.

Billing and Coding¹

Fee Range	\$0 - \$35
CDT Code	D0431 ²

*Cancer Facts & Figures 2014, 2015 & 2016; American Cancer Society

†Oralcancerfoundation.org/facts/

¹Policy coverage may vary across insurance plans.

²Adjunctive pre-diagnostic test that aids in detection of mucosal abnormalities including pre-malignant and malignant lesions, not to include cytology or biopsy procedures.

©2016 Den-Mat Holdings, LLC. All rights reserved. 821281500 10/16SN

Introducing ViziLite PRO

The ViziLite PRO Oral Lesion Screening System has been engineered to operate within the wavelength for optimal discrimination of oral lesions. This latest innovation in light-based fluorescence technology provides a fast and effective approach to detecting epithelial dysplasia, even in its earliest stages.

Optical Viewing Filter

Enhances visualization and improves contrast between healthy and abnormal tissue.

Ergonomic Design

Cordless, easy-to-hold handle enables ease of use and provides clinician comfort.

Quiet Operation

Lightweight, aluminum housing serves as a natural heat sink, which eliminates the need for an internal fan.

Long-Lasting Rechargeable Lithium-Ion Battery

Perform over 100 one-minute examinations on a single charge, improving clinical efficiency.

Lithium-Ion Battery Charger

Multicolor LED indicates charging status:

During Charging Fully Charged



*Based on U.S. retail price. Canadian pricing may vary.

Viewing Side

Work in the Light

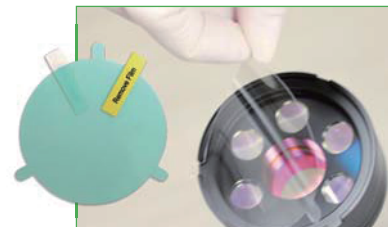
Five (5) powerful shortwave violet output LEDs generate biofluorescence and enhance visualization in the oral cavity, without needing to dim the operatory lights.

Light Output Regulation

Output LEDs maintain full power until battery is depleted.

Auto Shutoff

After five minutes of continuous operation, the violet output LEDs automatically turn off to conserve battery power.



Minimal Consumable Overhead

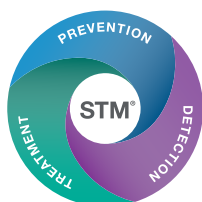
Single-use protective lens covers prevent cross contamination at a cost of less than \$1 per patient.*



Patient Protective Eyewear

Polycarbonate amber lenses absorb 99.9% of harmful UV A, B and C, 180-380 nm.

Patient Side



ViziLite PRO is a key pillar of the DenMat Soft Tissue Management Program.